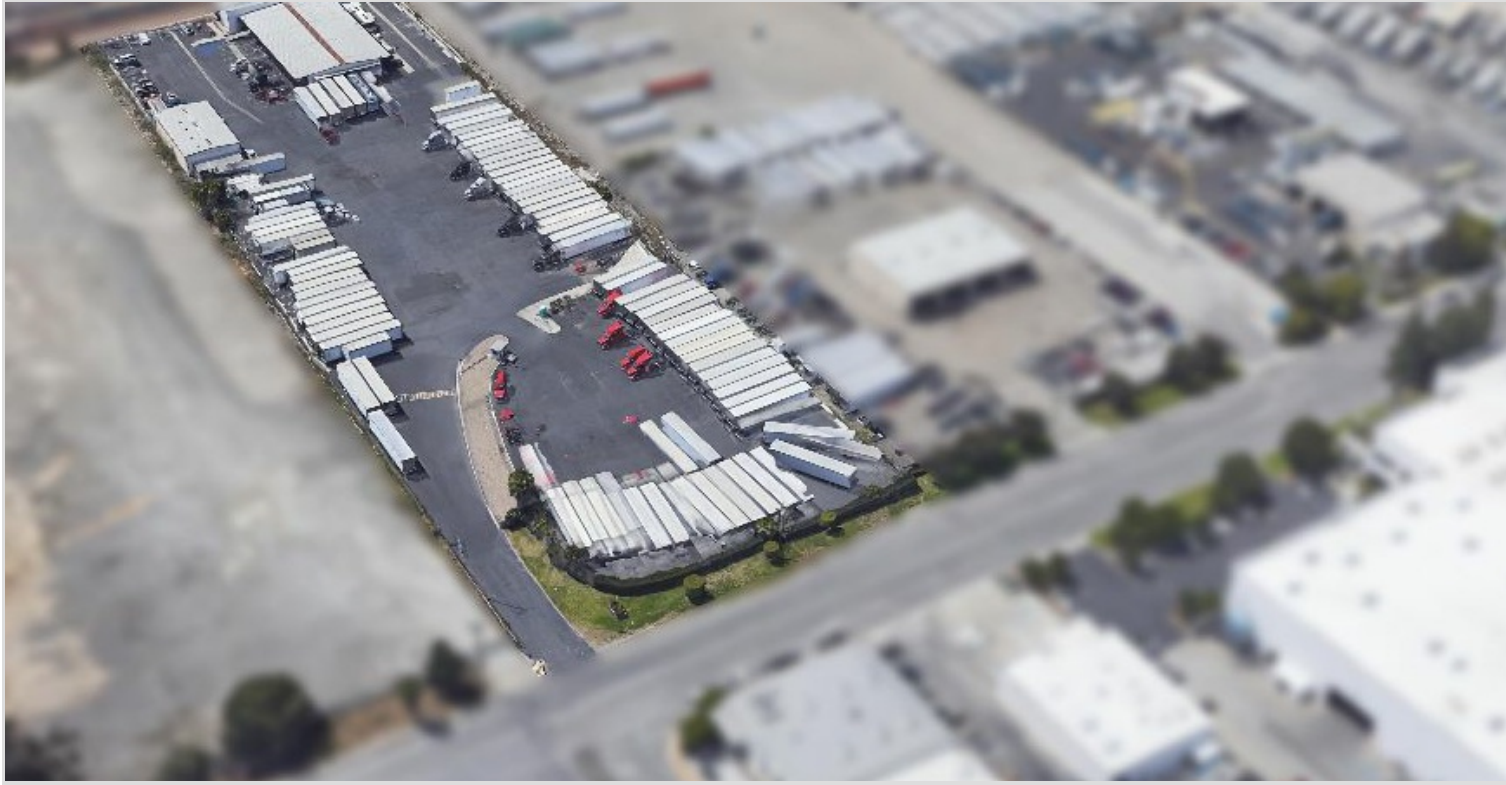


12133 GREENSTONE AVENUE

SANTA FE SPRINGS, CA 90670 | MID-COUNTIES



LEASE RATE/ TYPE **TBD**

PROPERTY TYPE
SINGLE TENANT

REGION
LOS ANGELES

SUBMARKET
MID-COUNTIES

YEAR BUILT / RENOVATED
1967 / 2021

TOTAL BUILDING SIZE
12,586 SF

AVAILABLE SF
0

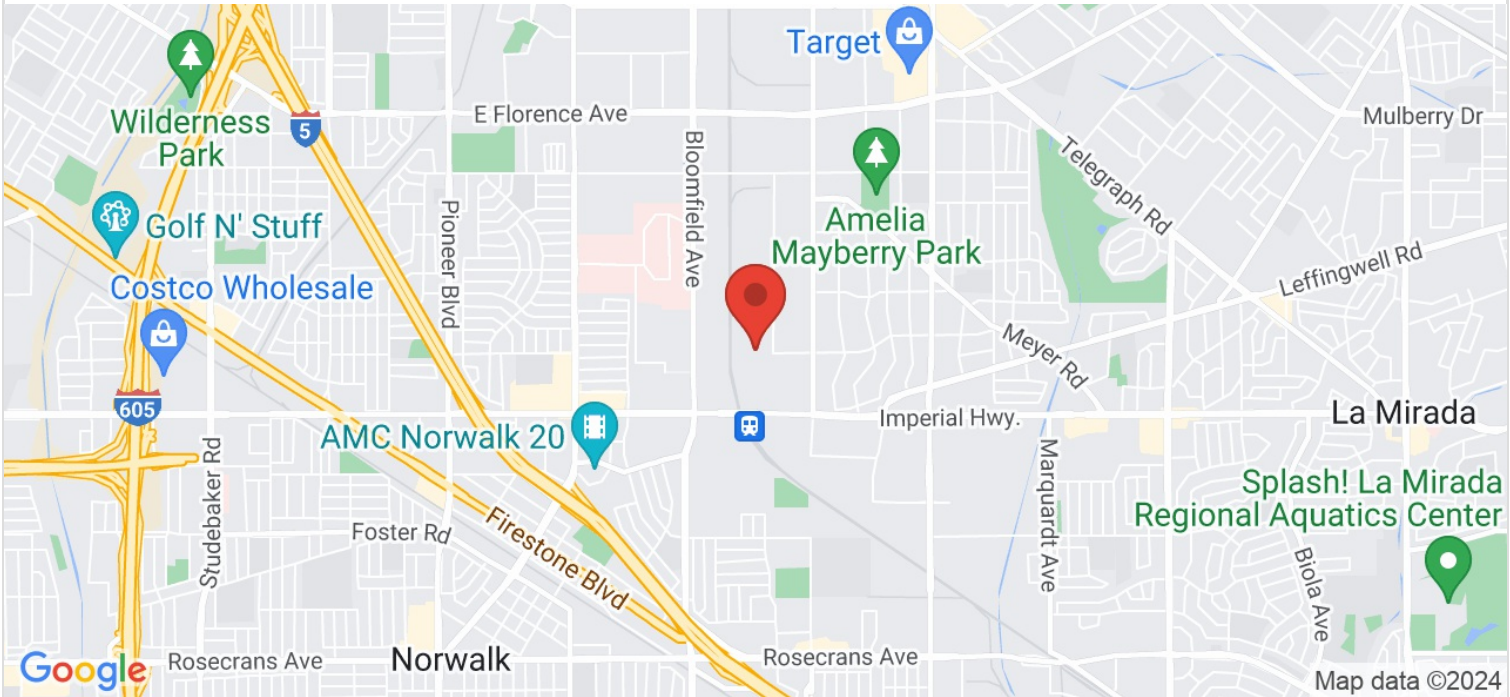
NUMBER OF BUILDINGS
1

12133 GREENSTONE AVENUE

SANTA FE SPRINGS, CA



Rexford
Industrial



Single tenant office structure/truck terminal containing 12,586 square feet. Built in 1967.

Offers convenient access to the 5, 105, and 605 freeways.

PROPERTY TYPE SINGLE TENANT	TOTAL BUILDING SIZE 12,586	CLEAR HEIGHT N/A
REGION LOS ANGELES	OFFICE SF N/A	PARKING SPACES N/A
SUBMARKET MID-COUNTIES	UNIT SF	DOCK HIGH POSITIONS N/A
YEAR BUILT / RENOVATED 1967 / 2021	FLOOR PLAN N/A	GROUND LEVEL DOORS N/A
LEASE RATE/TYPE TBD		SPRINKLERS N/A

LEASING CONTACT: NICHOLAS SEGAL
EMAIL: NSEGAL@REXFORDINDUSTRIAL.COM
PHONE:

No representation or warranty, express or implied, is made as to the accuracy or completeness of the information contained herein and any reliance thereon is at your sole risk.